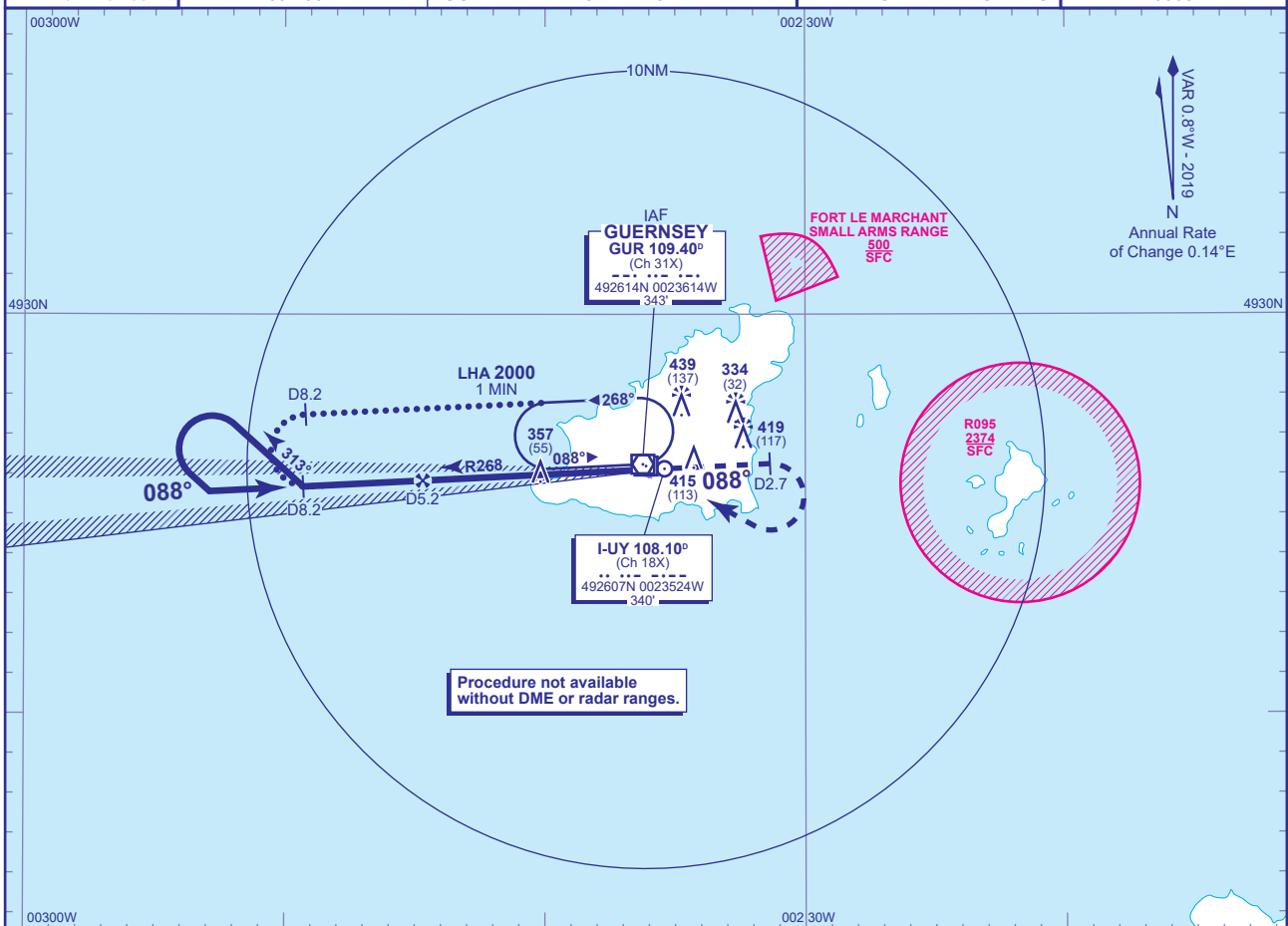


APP	128.655	GUERNSEY APPROACH	AD ELEVATION 336
TWR	119.955	GUERNSEY TOWER	THR ELEVATION 302
GMC	121.805	GUERNSEY GROUND	OBSTACLE ELEVATION 439 AMSL (137') (ABOVE THR)
RAD	124.505	GUERNSEY RADAR	
ATIS	109.400	GUERNSEY INFORMATION	BEARINGS ARE MAGNETIC

TRANSITION ALTITUDE
5000



DME I-UY	5	4	3	2	1
ALT(HGT)	1950(1648)	1630(1328)	1310(1008)	990(688)	670(368)

Continuous climb to **3000**, initially climb straight ahead to **1300**, or **I-UY DME 2.7** outbound whichever is the later, then climbing turn right to **VOR GUR** at **3000**, or as directed.

Aircraft Category		A	B	C	D	Rate of descent	G/S KT	160	140	120	100	80
OCA (OCH)	CAT I	466(164)	478(176)	490(188)	503(201)		FT/MIN	850	740	640	530	420
VM(C)OCA (OCH AAL)	Total Area	830(494)	830(494)	930(594)	1030(694)							

ALTERNATIVE PROCEDURE EXTENDED HOLDING PATTERN
Arrival at VOR GUR (IAF) at **2000**. Extend the outbound leg of the VOR GUR holding pattern to I-UY DME 8.2 then turn left to establish on LOC. When established, descend on glide path to DA(H).

BASIC PROCEDURE: Inform ATC. Radar ranges will be passed at 8.2NM outbound, as appropriate and at 5.2NM inbound and 2.7NM outbound during missed approach procedure.

ALTERNATIVE PROCEDURE: Radar ranges will be passed at 8.2NM outbound as appropriate then as for basic procedure.

NOTE Aircraft will normally be required to hold not lower than 3000.

CHANGE (10/23): GUERNSEY RADAR FREQUENCY.